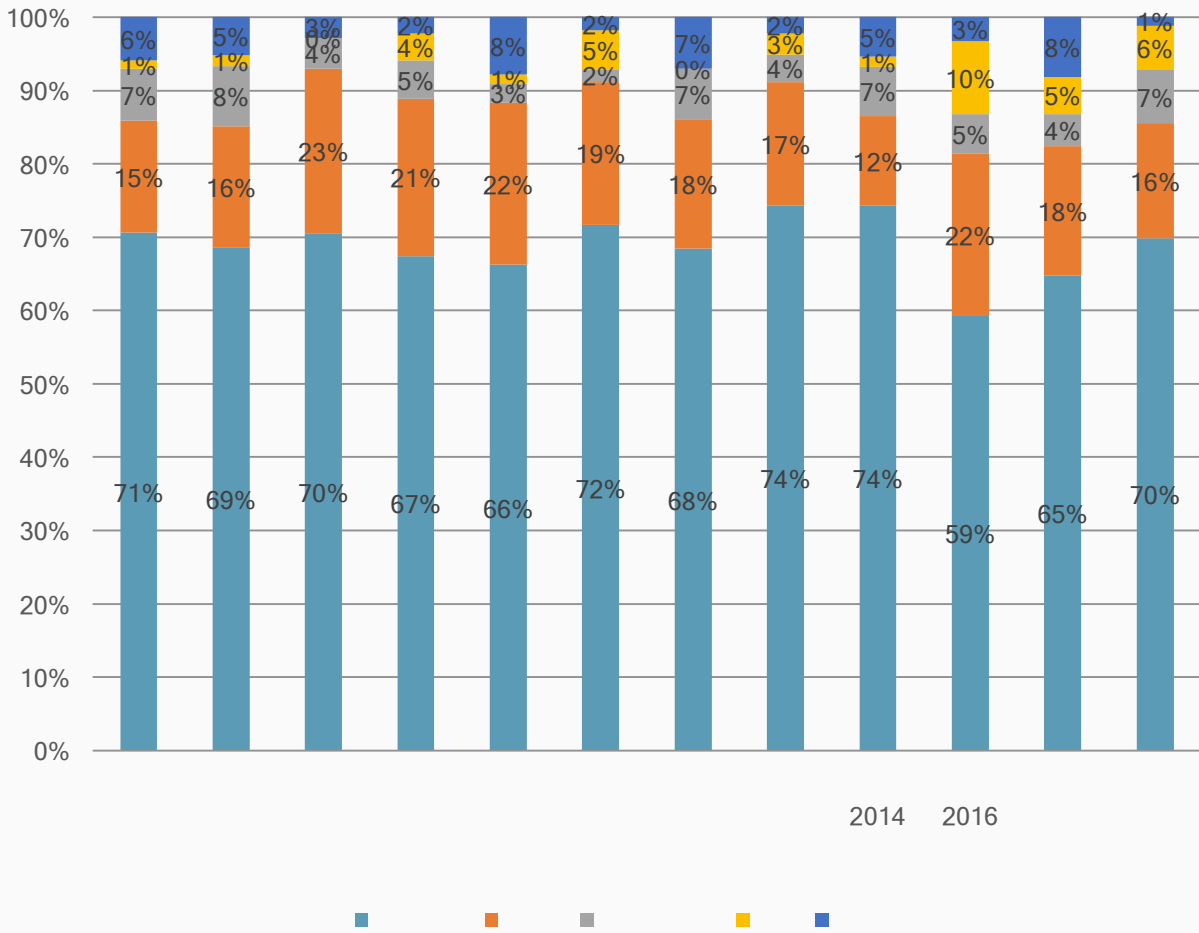
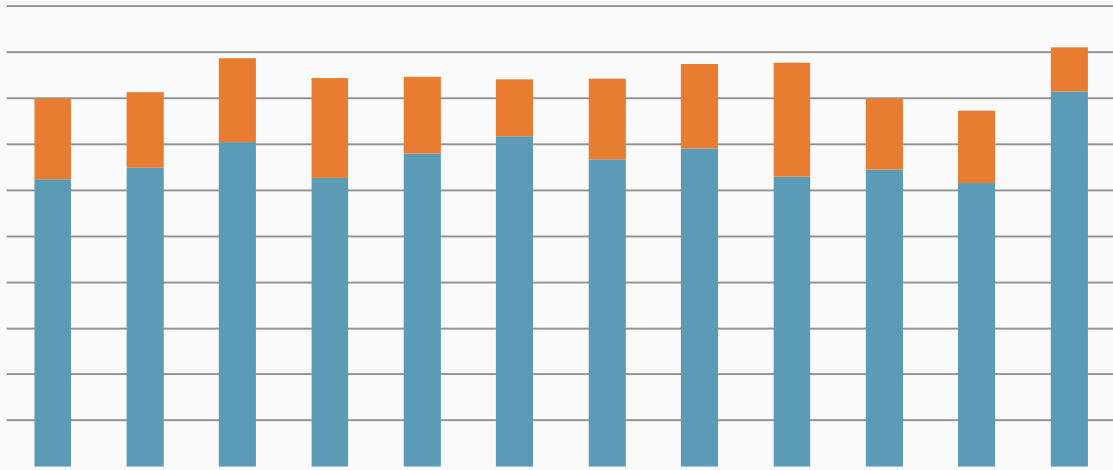


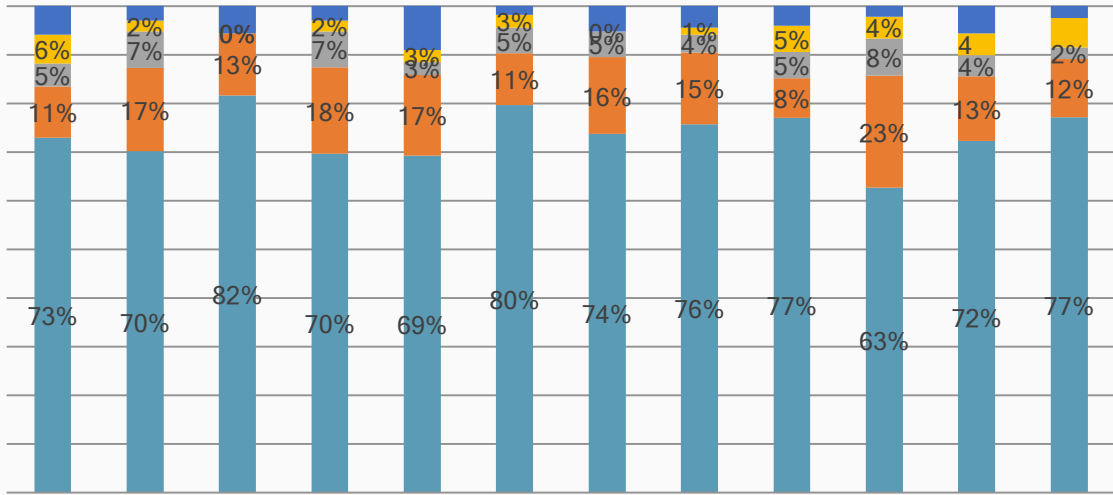
! " # \$ % &

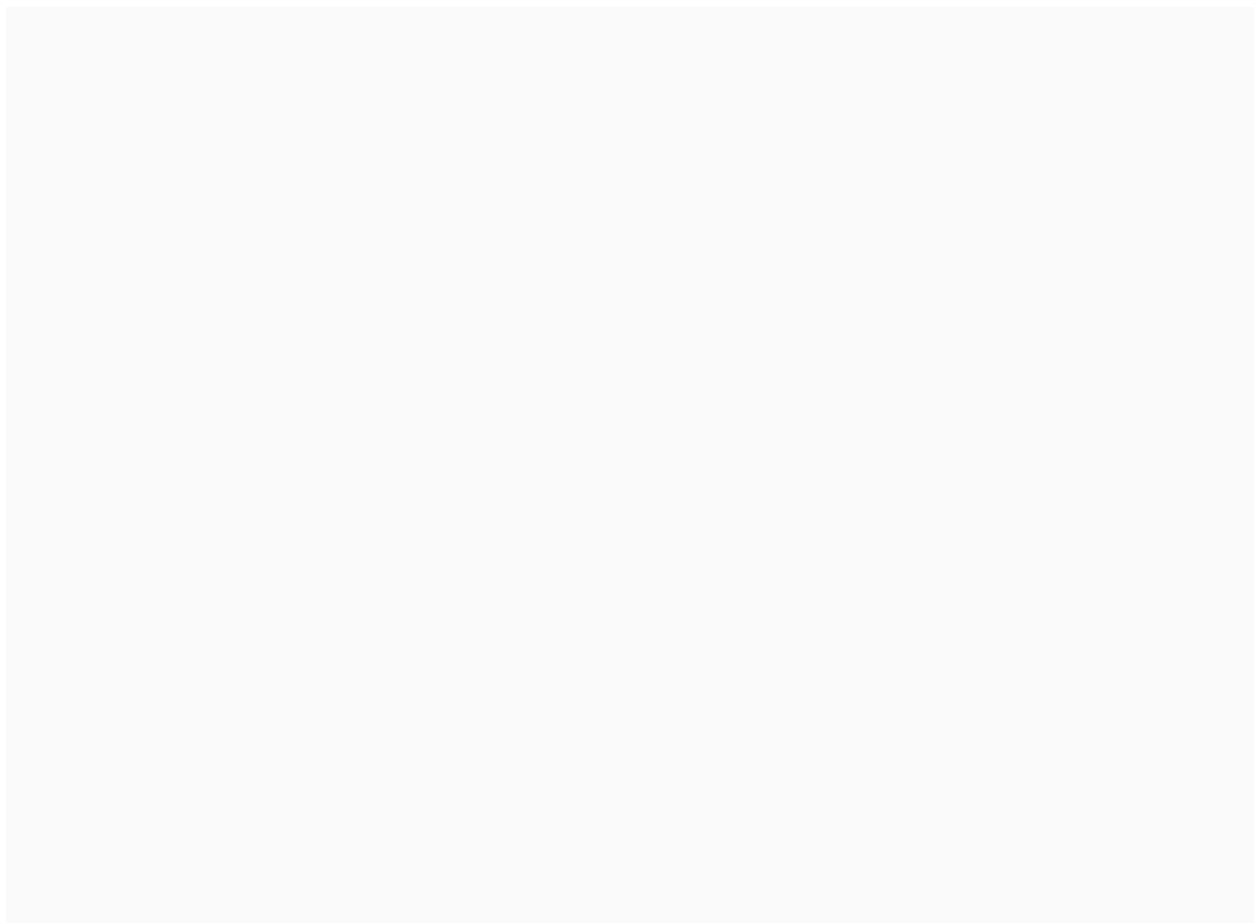
<=&#"#\$%&>);&)&O\$\$\$;&?, \$@*:; 0: &), ; &" , ; :%&#), ; +, O&\$A&#>: &
 8" BC: D#&E)##: %









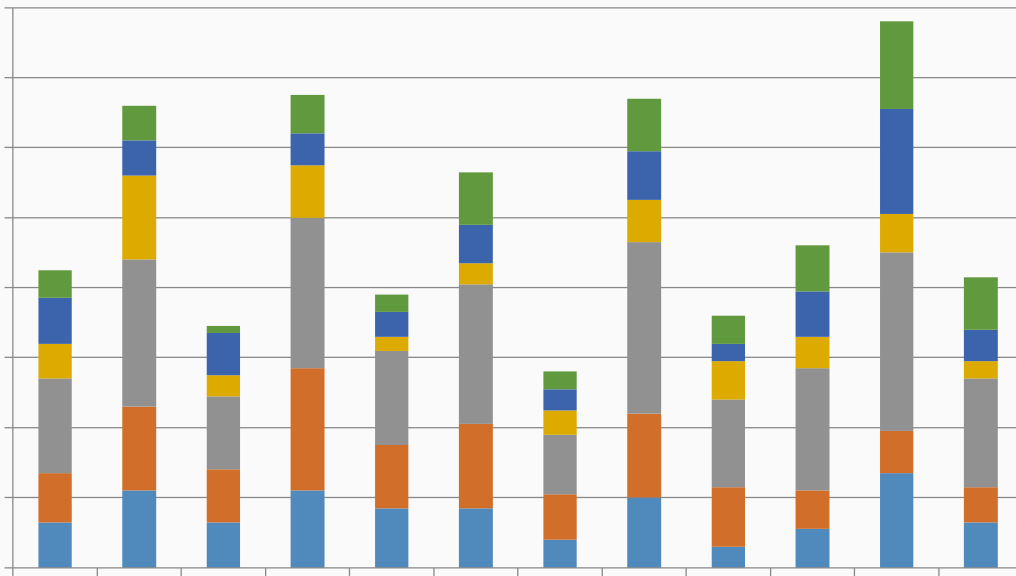


1. The first part of the document discusses the importance of maintaining accurate records in a laboratory setting. It emphasizes the need for clear labeling and organization of samples and equipment to ensure the reliability of experimental results.

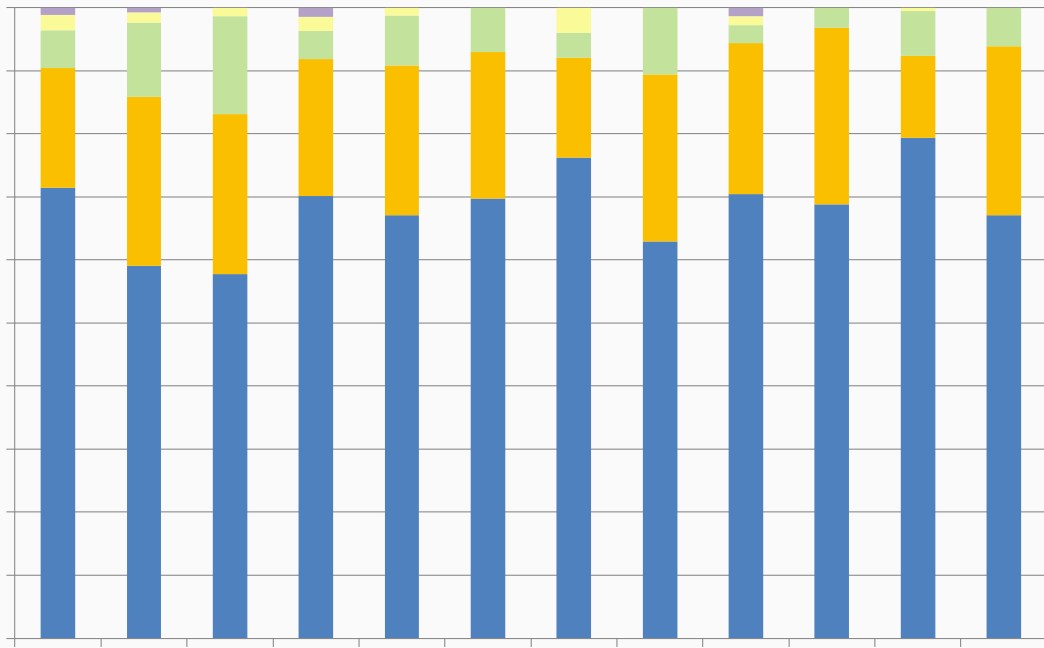
2. The second section focuses on the safety protocols that must be followed when handling hazardous materials. This includes wearing appropriate personal protective equipment (PPE) and understanding the specific risks associated with each substance used in the experiments.

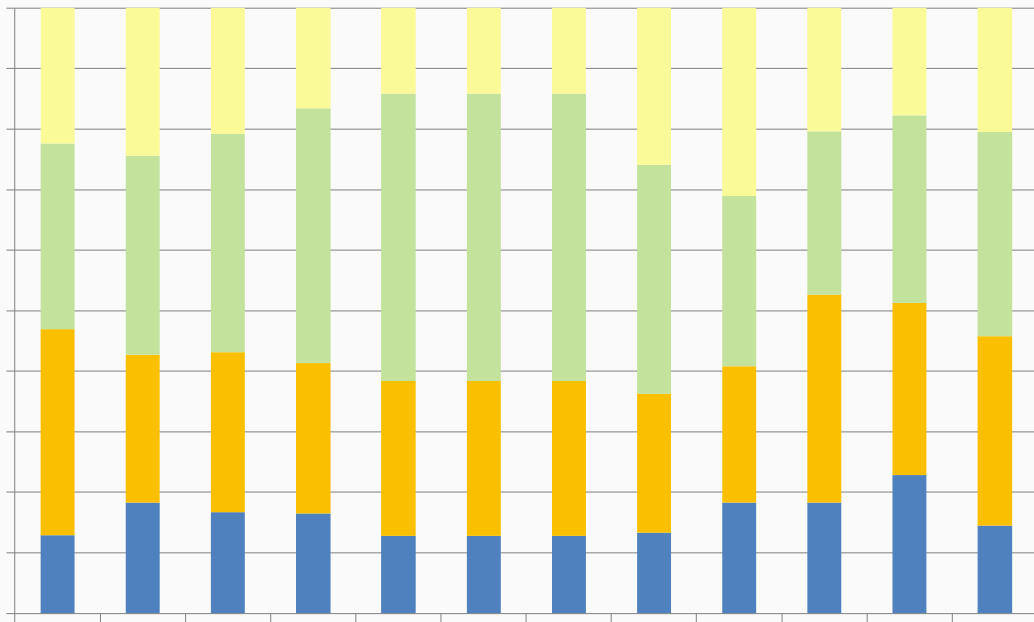
3. The third part of the document describes the various techniques used for data collection and analysis. It details the use of spectrophotometry, chromatography, and other analytical methods to measure and interpret experimental data.

4. The final section discusses the importance of peer review and the publication of research findings. It highlights the role of scientific journals in disseminating new discoveries and the impact of these findings on the broader scientific community.

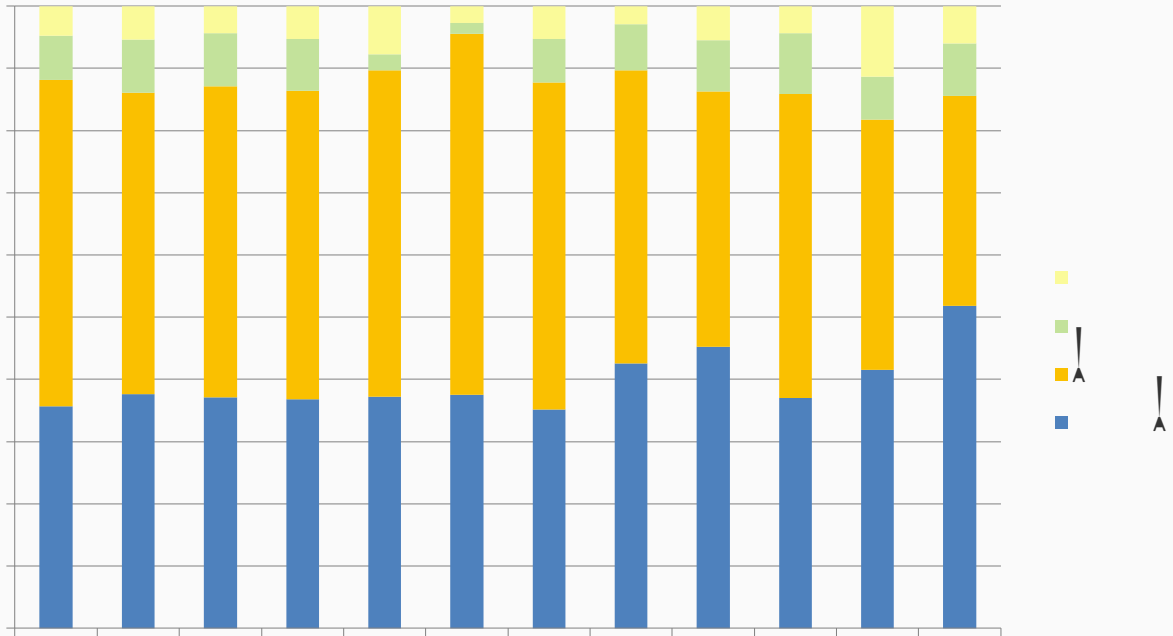


7"%, #9MN





M) %#+D+ /) #+, O&+, &#>: &#" # \$%+, O&/%\$0%) E &>) 8&+E /%\$ (: ; &E =&
\$ (: %) **&) D) ; : E +D&8?+**8F



l&) E&E\$%: &8)#+8A+: ; &@+#>&E=&D\$**: 0: &: H/: %+: , D: &)8&)&%: 8''#&\$A&''8+, 0&#>: &
7!P' &M: : %Q#''#\$%+, 0&M%\$0%) EF

